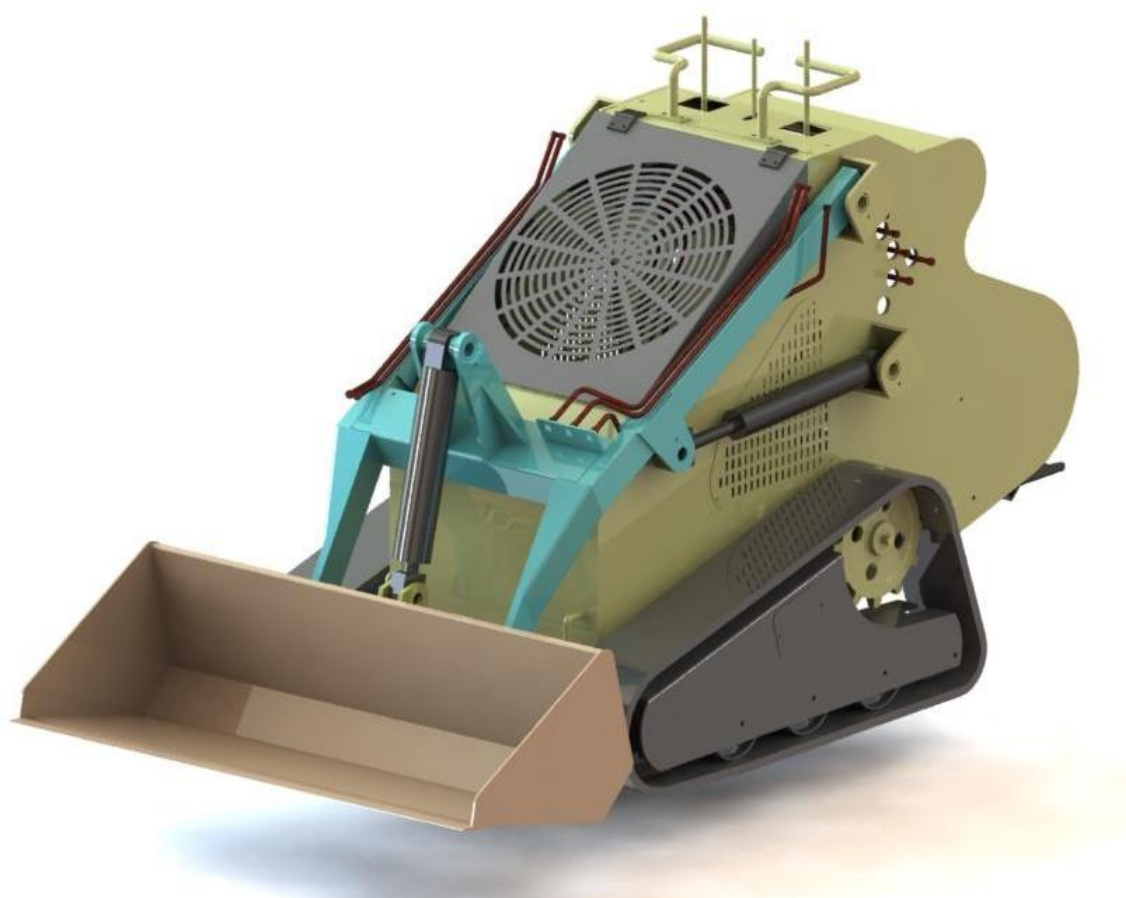


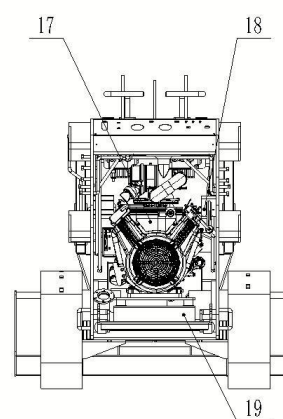
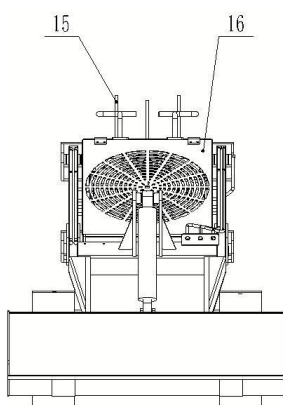
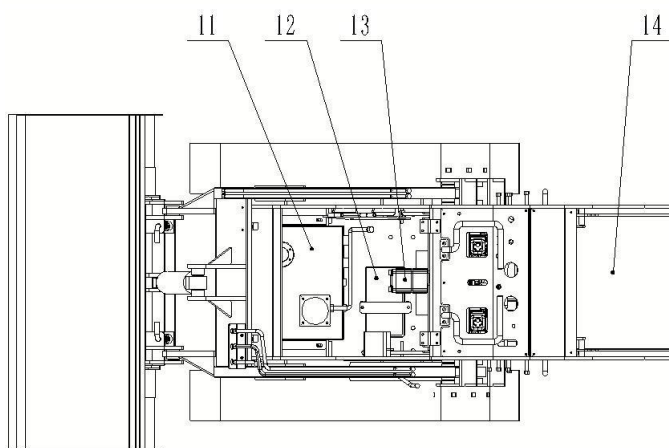
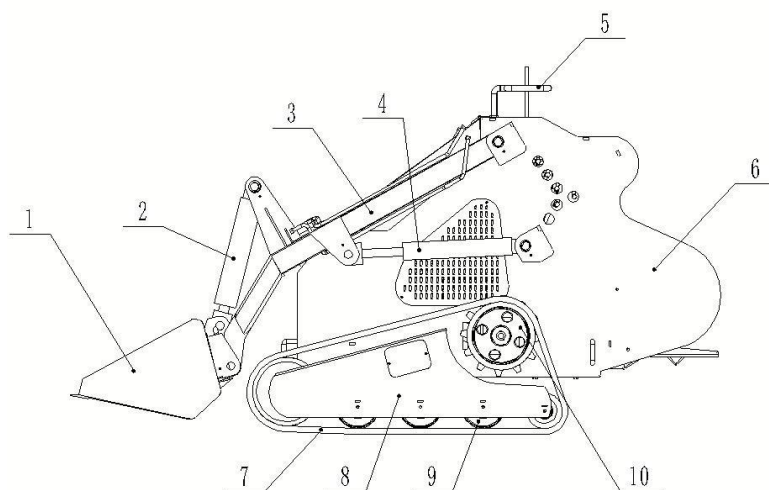
---

## **ACHILLES T35 skid steer loader Manual**



## GENERAOL INSTRUCTION

1	Basket
2	Bucket hydraulic cylinder
3	Lift arm
4	Lifting arm hydraulic cylinder
5	Handrail
6	Rack
7	RUBBER TRACK
8	Track beam
9	Thrust wheel
10	Driving wheel
11	OIL TANK
12	Storage battery
13	Hydraulic moto
14	Pedal
15	Action bars
16	Upper cover
17	Engine
18	Start switch
19	Gasoline tank



## **1. Standard Equipment and Specifications**

### **MASSES**

- Transport mass 950kg

### **DIMENSIONS**

- Overall (L x W x H) 2370X740X1350mm
- Transport dimensions(L x W x H)  
1870X740X1350mm

### **HYDRAULIC**

- Pump Tandem gear pump(6cc x2)  
4000rpm 3600rpm
- Motor BMER series cycloidal motor (x2)
- Working pressure Max. 25Mpa
- Hydraulic flow 75L
- Motor torque 990Nm 20.5 Mpa

### **TRACTION**

- Driving Hydraulic
- Steering Fully hydraulic / control valve
- Forward 0-6km/h
- Reverse 0-6km/h
- Gradeability 15°
- Ground clearance 210mm

### **ENGINE**

- Model BTIGGS STRATTON 3864
- Emission accordance EPA
- Rated power 23HP/3600rpm
- Displacement 627cc
- Cylinder x stroke 75.5X70mm
- Fuel tank volume 20L
- Oil volume 1.7L
- Net weight 35Kg
- Startup E-starter

### **STANDARD CONFIG.**

- Separate hydraulic circuit for equipment traction
- Forward and reverse drive controls by handle
- Customized transition gear box for easy engine startup under low ambient temperature
- Option with reverse startup and electric
- Foldable platform for flexible maneuver

## **2. Operation**

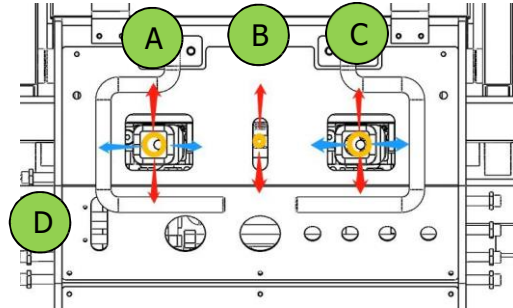
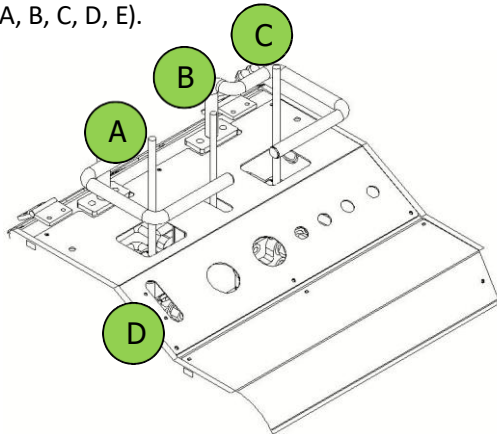
- Do not run the engine in a closed space in which dangerous carbon monoxide fumes can accumulate
- When using walking driver machines, be extremely careful when changing direction on a slope
- Make sure you are always balanced on slopes
- When reversing, make sure the area behind you is clear
- Do not change engine and transmission settings
- Reduce the accelerator when cutting off the engine and turn the valve to OFF when work is complete
- Do not transport passengers
- If safety is in doubt, don't use the machine
- Keep the stickers, guards and protection systems in place. Replace the Operator manual if it is lost or damaged.
- Follow safety instructions, otherwise you run the risk of injuring yourself or somebody else.
- Do not allow children, unskilled or untrained people to use the machine

### 3. **Maneuver**

#### ***Control levers***

The control lever has 4 functions:

- First familiarize yourself with the driving characteristics of the machine on a free, level surface.
- The following pictures show the positions of the controls. The positions and functions of the operating elements may differ slightly depending on the model.
- The machine is delivered with 5 control levers (A, B, C, D, E).



Control lever A moves forward and backward to control the lifting and lowering of the hopper

Control lever A moves left and right to control the left walking motor, forward and backward

Control lever B moves back and forth to control the forward and backward rotation of the implement

Control lever C moves forward and backward to control bucket flipping

Control lever C moves left and right to control the right walking motor, forward and backward

The control lever D is the engine speed control lever, which increases the throttle when pushed forward and decreases when pulled back

#### **4. Starting the engine**

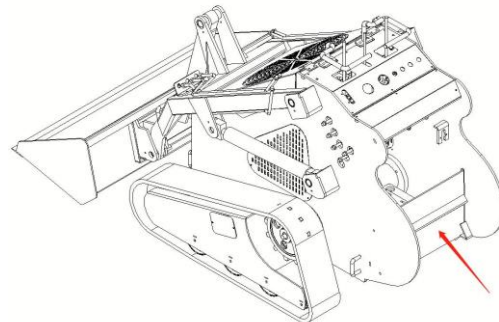
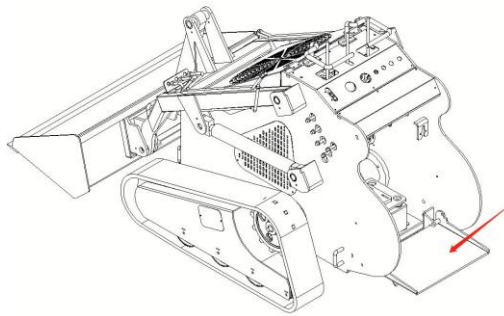
- Check the engine oil level and top up if required. Open the fuel valve under the fuel tank.
- For cold starts, push the accelerator lever completely forward to activate the choke
- Pull the starter to start the engine/switch on ignition key
- As soon as the engine starts, gradually remove the lever from the choke position until the engine runs without it

#### **5. Stopping the machine**

- Cut the accelerator to slow down the engine, cut the engine by placing the accelerator lever in its maximum rear position/switch off the ignition key
- REMARK: Carry out all adjustments when the engine is cut off and the spark plug wire disconnected

#### **6. Platform folding**

- Foldable operation station board, retractable through air springs

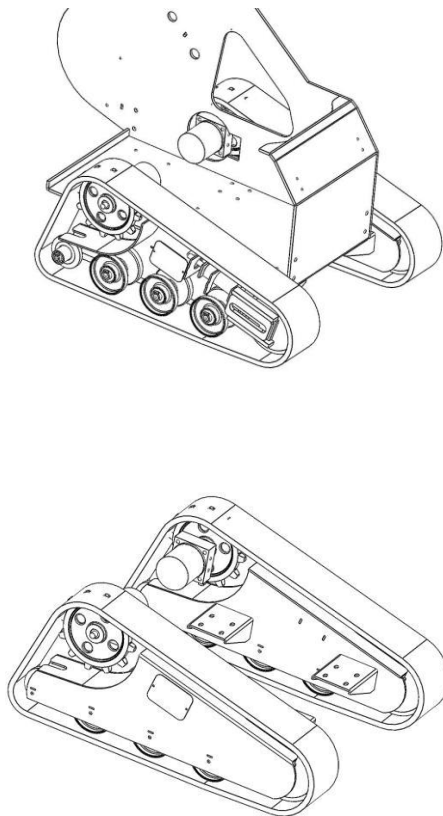


## **7. Track tensioning**

The track chassis is composed of two track devices on the left and right sides. Inside each side of the track side beam, there are drive wheels, support wheels, guide wheels, and tensioning wheels.

Walking relies on the connection of the driving wheel and the motor to drive the walking, making it convenient and flexible

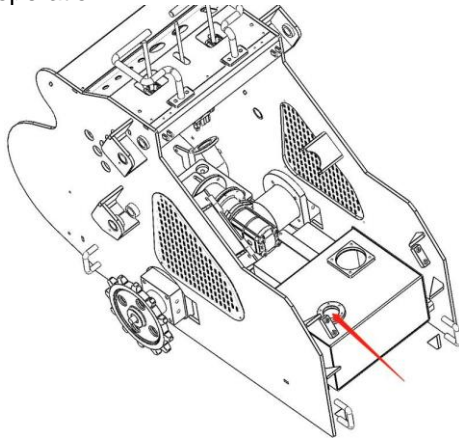
The tensioning structure is a hydraulic tensioning structure, which uses oil injection to tighten and stretch the track, tighten the track, and has a spring device for walking buffering.



## 8. Hydraulic operation

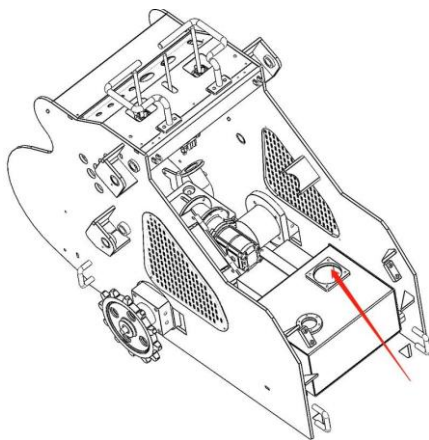
### ***Filling up the hydraulic oil***

- Remove the cap from the oil tank.
- Refill hydraulic oil through the mouth.
- Screw the cap back on tightly.
- Start the engine according to the instructions.
- Operate control lever and shift lever briefly. Then stop the engine again and check the hydraulic oil level again.
- Repeat the procedure if necessary.
- Check the oil level again after 8 hours of operation.



### ***Filter Change***

- Drain the oil tank according to the instructions.
- Loosen the filter cap
- Remove the old filter with an appropriate wrench.
- Lubricate the seal of the new filter a little.
- Insert the new filter and screw it tight by hand.
- Restore the appropriate oil quantity.





## **9. Maintenance**

### ***Every day***

- Check levels and top up fuel, engine oil and hydraulic oil
- Check for leaks
- Check and clean the air filter if necessary
- Check that all nuts and bolts are tight
- Clean the machine
- Check that the controls are neither damaged nor jammed
- Lubricate the movement control cables and gates control cables
- Repair or replace if necessary
- DO NOT USE THE MACHINE if any situation

### ***After first 20 hours of using***

- Change the engine oil filter (refer to Honda manual)
- Clean the engine air filter (refer to Honda manual)
- Change the hydraulic filter and the hydraulic oil

### ***After first 100 hours of using***

- Change the filter and the hydraulic oil

### ***Every 100 hours of use or every 6 months***

- Change the engine oil and filter
- Change the fuel filter
- Clean or replace the air filter

### ***Every 400 hours of use or every year:***

- Change the hydraulic filter and oil
- Check the hydraulic valve
- Check the hydraulic motor
- Check and replace the hydraulic pump if necessary
- **See the Engine manual for specific engine maintenance (refer to Honda manual)**

**THE END**